



UTC SERIES



U-TUBE FIXED TUBE BUNDLE

HEAT EXCHANGERS

- Available in a variety of sizes.
- Operating pressure for tubes 150 PSI.
- Operating pressure for shell 150 PSI.
- Operating temperature 350 °F.
- Can be customized to fit your needs.
- Cools: Temperature controllers, high temperature lubrication equipment, etc.

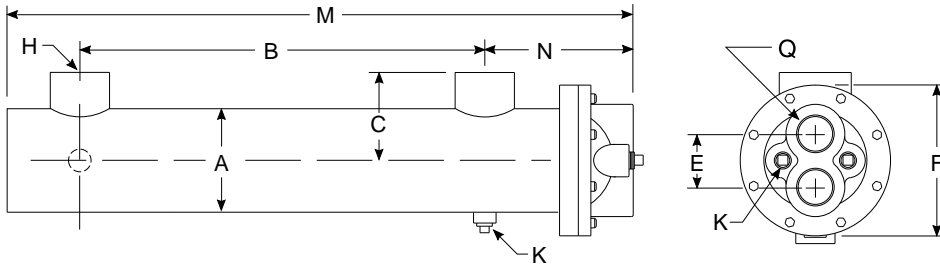
UTC Series *dimensions*

- 12 standard models available
- 500°F continuous operation
- U-Tube Fixed Bundle construction
- Can be modified to fit specific needs

High temperature design heat exchangers for hot oil heating and cooling units for plastic injection molding machines. Heat exchanger allows for a large temperature differential between the hot fluid and cooling fluid making it ideal for high temperature liquid cool down or maintaining liquid at high temperature.

DIMENSIONS

Model	M	N	Q NPT
UTC-614	18.12		
UTC-624	28.12	4.59	1.00
UTC-630	34.12		
UTC-814	18.00		
UTC-824	28.00	4.84	1.25
UTC-830	34.00		
UTC-1014	18.11		
UTC-1024	28.11	4.96	1.50
UTC-1030	34.11		
UTC-1214	18.41		
UTC-1224	28.41	5.51	2.00
UTC-1230	34.41		



COMMON DIMENSIONS

Model	A	B	C	E	F	H NPT	K NPT	Tube Dia.	Model
UTC-614-94082 UTC-624-94083 UTC-630-94084	3.25	12.00 22.00 28.00	2.75	2.00	4.25	1.00	(2) .38	.25	UTC-614-94082 UTC-624-94083 UTC-630-94084
UTC-814-94085 UTC-824-94086 UTC-830-94087	4.25	11.25 21.25 27.25	3.25	2.12	6.00	1.50	(4) .38	.25	UTC-814-94085 UTC-824-94086 UTC-830-94087
UTC-1014-94088 UTC-1014-94089 UTC-1024-94090 UTC-1024-94091 UTC-1030-94092 UTC-1030-94093	5.25	11.25 11.25 21.25 21.25 27.25 27.25	3.75	2.38	7.00	1.50	(2) .38	.25 .375 .25 .375 .25 .375	UTC-1014-94088 UTC-1014-94089 UTC-1024-94090 UTC-1024-94091 UTC-1030-94092 UTC-1030-94093
UTC-1214-94094 UTC-1214-94095 UTC-1224-94096 UTC-1224-94097 UTC-1230-94098 UTC-1230-94099	6.25	10.75 10.75 20.75 20.75 26.75 26.75	4.25	2.88	8.00	2.00	(2) .38	.25 .375 .25 .375 .25 .375	UTC-1214-94094 UTC-1214-94095 UTC-1224-94096 UTC-1224-94097 UTC-1230-94098 UTC-1230-94099

STANDARD CONSTRUCTION MATERIALS & RATINGS

Construction Material		Optional Material	Standard Unit Ratings Operating Pressure Tubes 150 psig Operating Pressure Shell 150 psig Operating Temperature 350 °F
Shell	Steel	Steel	
Tubes	Copper	90/10 Cu. Ni. / S. Steel	
Baffle	Brass	Brass	
End Bonnet	Cast Iron	Brass / Stainless Steel	
Gasket	High Temperature Gasket		

SURFACE AREA

Model Number	Surface Area in Sq.ft.		Model Number	Surface Area in Sq.ft.	
	1 / 4" O.D. Tubing	3 / 8" O.D. Tubing		1 / 4" O.D. Tubing	3 / 8" O.D. Tubing
UTC-614	3.66		UTC-1014	10.99	5.95
UTC-624	6.28	—	UTC-1024	18.85	10.21
UTC-630	7.85		UTC-1030	23.56	12.76
UTC-814	7.02		UTC-1214	14.96	10.99
UTC-824	12.04	—	UTC-1224	25.65	18.84
UTC-830	15.05		UTC-1230	32.07	23.56

NOTE: We reserve the right to make reasonable design changes without notice.