



**URTC SERIES**



**U-TUBE REMOVABLE TUBE BUNDLE**

**HEAT EXCHANGERS**

- Available in a variety of sizes.
- Operating pressure for tubes 150 PSI.
- Operating pressure for shell 150 PSI.
- Operating temperature 350 °F.
- Can be customized to fit your needs.
- Cools: Temperature controllers, high temperature lubrication equipment, etc.

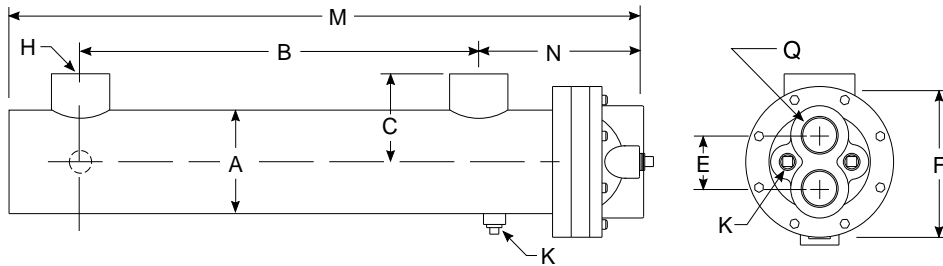
# URTC Series *dimensions*

- 12 standard models available
- 500°F continuous operation
- U-Tube Removable Bundle construction
- Can be modified to fit specific needs

High temperature design heat exchangers for hot oil heating and cooling units for plastic injection molding machines. Heat exchanger allows for a large temperature differential between the hot fluid and cooling fluid making it ideal for high temperature liquid cool down or maintaining liquid at high temperature.

## DIMENSIONS

| Model     | M     | N    | Q<br>NPT |
|-----------|-------|------|----------|
| URTC-614  | 18.87 |      |          |
| URTC-624  | 28.87 | 5.34 | 1.00     |
| URTC-630  | 34.87 |      |          |
| URTC-814  | 18.75 |      |          |
| URTC-824  | 28.75 | 5.59 | 1.25     |
| URTC-830  | 34.75 |      |          |
| URTC-1014 | 18.86 |      |          |
| URTC-1024 | 28.86 | 5.71 | 1.50     |
| URTC-1030 | 34.86 |      |          |
| URTC-1214 | 19.16 |      |          |
| URTC-1224 | 29.16 | 6.26 | 2.00     |
| URTC-1230 | 35.16 |      |          |



## COMMON DIMENSIONS

| Model  | A    | B  | C    | E    | F    | H<br>NPT | K<br>NPT   | Tube<br>Dia.                              | Model  |
|--|------|--|------|------|------|----------|------------|---|--|
| URTC-614-94107<br>URTC-624-94108<br>URTC-630-94109   | 3.25 | 12.00<br>22.00<br>28.00                            | 2.75 | 2.00 | 4.25 | 1.00     | (2)<br>.38 | .25                                       | URTC-614-94107<br>URTC-624-94108<br>URTC-630-94109   |
| URTC-814-94110<br>URTC-824-94111<br>URTC-830-94112   | 4.25 | 11.25<br>21.25<br>27.25                            | 3.25 | 2.12 | 6.00 | 1.50     | (4)<br>.38 | .25                                       | URTC-814-94110<br>URTC-824-94111<br>URTC-830-94112   |
| URTC-1014-94113<br>URTC-1014-94114<br>URTC-1024-94115<br>URTC-1024-94116<br>URTC-1030-94117<br>URTC-1030-94118 | 5.25 | 11.25<br>11.25<br>21.25<br>21.25<br>27.25<br>27.25 | 3.75 | 2.38 | 7.00 | 1.50     | (2)<br>.38 | .25<br>.375<br>.25<br>.375<br>.25<br>.375 | URTC-1014-94113<br>URTC-1014-94114<br>URTC-1024-94115<br>URTC-1024-94116<br>URTC-1030-94117<br>URTC-1030-94118 |
| URTC-1214-94119<br>URTC-1214-94120<br>URTC-1224-94121<br>URTC-1224-94122<br>URTC-1230-94123<br>URTC-1230-94124 | 6.25 | 10.75<br>10.75<br>20.75<br>20.75<br>26.75<br>26.75 | 4.25 | 2.88 | 8.00 | 2.00     | (2)<br>.38 | .25<br>.375<br>.25<br>.375<br>.25<br>.375 | URTC-1214-94119<br>URTC-1214-94120<br>URTC-1224-94121<br>URTC-1224-94122<br>URTC-1230-94123<br>URTC-1230-94124 |

## STANDARD CONSTRUCTION MATERIALS & RATINGS

| Construction Material | Optional Material        | Standard Unit Ratings   |
|-----------------------|--------------------------|---|
| Shell                 | Steel                    | Operating Pressure Tubes<br>150 psig<br>Operating Pressure Shell<br>150 psig<br>Operating Temperature<br>350 °F |
| Tubes                 | Copper                   |   |
| Baffle                | Brass                    |   |
| End Bonnet            | Cast Iron                |   |
| Gasket                | High Temperature Gasket  |   |
|                       | 90/10 Cu. Ni. / S. Steel |   |
|                       | Brass / Stainless Steel  |   |

## SURFACE AREA

| Model Number | Surface Area in Sq.ft. |                    | Model Number | Surface Area in Sq.ft. |                    |
|--------------|------------------------|--------------------|--------------|------------------------|--------------------|
|              | 1 / 4" O.D. Tubing     | 3 / 8" O.D. Tubing |              | 1 / 4" O.D. Tubing     | 3 / 8" O.D. Tubing |
| URTC-614     | 3.66                   |                    | URTC-1014    | 10.99                  | 5.95               |
| URTC-624     | 6.28                   | —                  | URTC-1024    | 18.85                  | 10.21              |
| URTC-630     | 7.85                   |                    | URTC-1030    | 23.56                  | 12.76              |
| URTC-814     | 7.02                   |                    | URTC-1214    | 14.96                  | 10.99              |
| URTC-824     | 12.04                  | —                  | URTC-1224    | 25.65                  | 18.84              |
| URTC-830     | 15.05                  |                    | URTC-1230    | 32.07                  | 23.56              |

NOTE: We reserve the right to make reasonable design changes without notice.